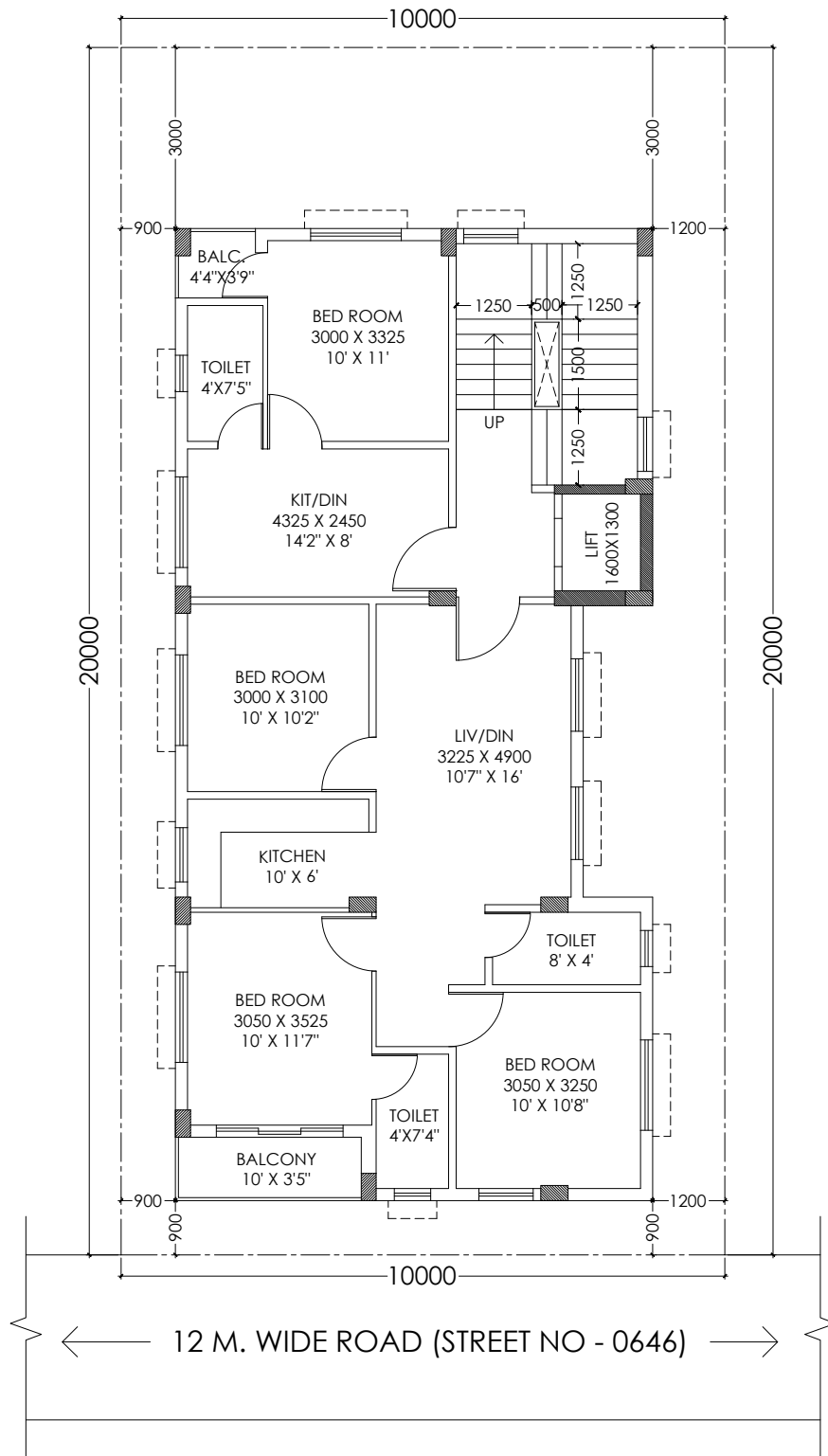




OPTION 1



AREA STATEMENT

PLOT AREA = 200.0 SQ.M.

PERMISSIBLE :

GROUND COVERAGE 55% = 130.0 SQ.M.
F.A.R.-2.5

PERMISSIBLE :

MANDATORY OPEN SPACE :
F.O.S.- 0.75 M. , S.O.S.(1)- 0.9 M.
S.O.S.(2)-1.2M. , R.O.S.- 3.0 M.

PROPOSED AREA :

GROUND FLOOR : 121.63 SQ.M. = 1309.2 SQ.FT
TYPICAL FLOOR (1ST TO 4TH) := 121.63 SQ.M
= 1309.2 SQ.FT

3 BHK : 72.98 SQ.M. = 785.5 SQ.FT

1 BHK : 28.65 SQ.M. = 308.4 SQ.FT

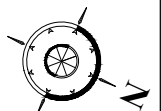
TYPICAL FLOOR PLAN (1ST TO 4TH)

PROPOSED G+IV RESIDENTIAL BUILDING AT PREMISES NO.
30-0600 plot no 1359 IN AA-IIB OF NEW TOWN, KOLKATA.

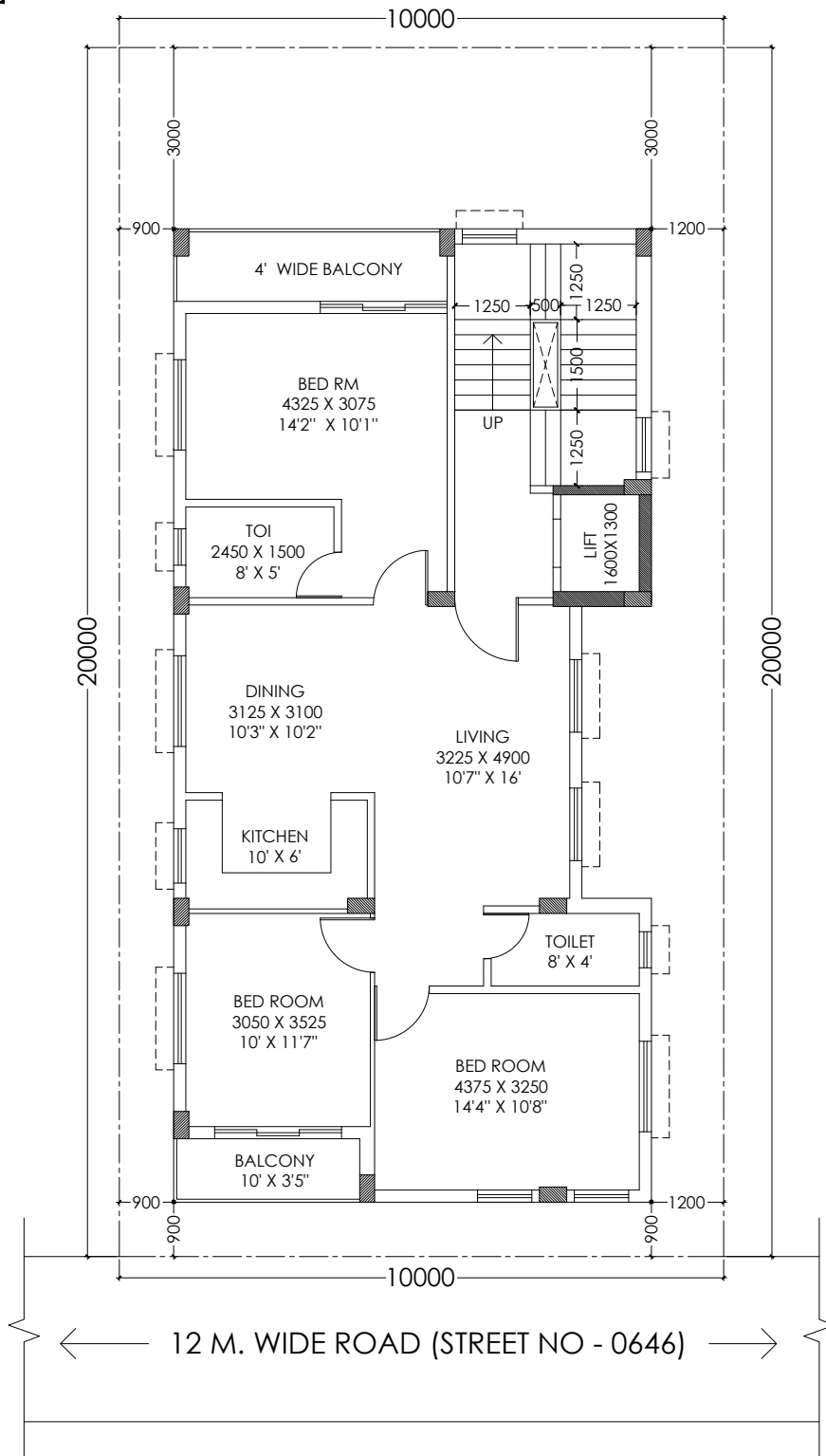
CONSULTANT :



DFORM
City office-
DD-185, Street no 295,
New Town, Kolkata-700156
Contact: 033-40061113



OPTION 1



AREA STATEMENT

PLOT AREA = 200.0 SQ.M.

PERMISSIBLE :

GROUND COVERAGE 55% = 130.0 SQ.M.
F.A.R.-2.5

PERMISSIBLE :

MANDATORY OPEN SPACE :
F.O.S.- 0.75 M. , S.O.S.(1)- 0.9 M.
S.O.S.(2)-1.2M. , R.O.S.- 3.0 M.

PROPOSED AREA :

GROUND FLOOR : 121.63 SQ.M. = 1309.2 SQ.FT
TYPICAL FLOOR (1ST TO 4TH) : = 121.63 SQ.M
= 1309.2 SQ.FT
FLAT AREA- 101.63 SQ.M. = 1094 SQ.FT

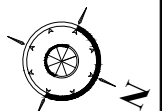
TYPICAL FLOOR PLAN (1ST TO 4TH)

PROPOSED G+IV RESIDENTIAL BUILDING AT PREMISES NO.
30-0600 plot no 1359 IN AA-IIB OF NEW TOWN, KOLKATA.

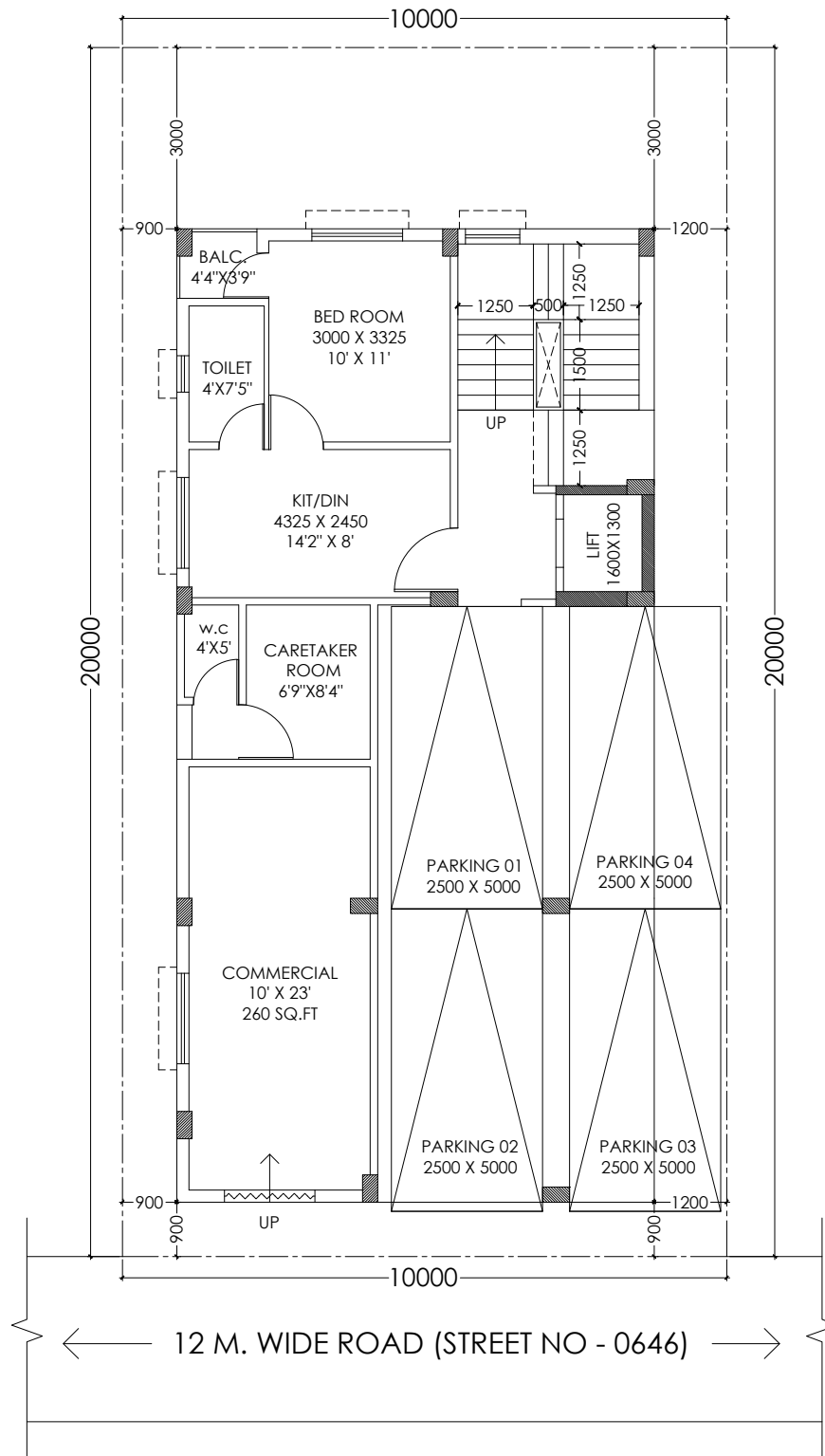
CONSULTANT :



DFORM
City office-
DD-185, Street no 295,
New Town, Kolkata-700156
Contact: 033-40061113



OPTION 1



AREA STATEMENT

PLOT AREA = 200.0 SQ.M.

PERMISSIBLE :

GROUND COVERAGE 55% = 130.0 SQ.M.
F.A.R.-2.5

PERMISSIBLE :

MANDATORY OPEN SPACE :
F.O.S.- 0.75 M. , S.O.S.(1)- 0.9 M.
S.O.S.(2)-1.2M. , R.O.S.- 3.0 M.

PROPOSED AREA :

GROUND FLOOR : 121.63 SQ.M. = 1309.2 SQ.FT
TYPICAL FLOOR (1ST TO 4TH) : = 121.63 SQ.M
= 1309.2 SQ.FT

3 BHK : 72.98 SQ.M. = 785.5 SQ.FT

1 BHK : 28.65 SQ.M. = 308.4 SQ.FT

GROUND FLOOR PLAN

PROPOSED G+IV RESIDENTIAL BUILDING AT PREMISES NO.
30-0600 plot no 1359 IN AA-IIB OF NEW TOWN, KOLKATA.

CONSULTANT :



DFORM
City office-
DD-185, Street no 295,
New Town, Kolkata-700156
Contact: 033-40061113

